

# Product overview 2016



**OCTAVE**  
MODERN CLASSIC



## **Noble & elegant**

With their classic design,  
OCTAVE components even fit  
in ultra-modern home interiors



# The best amplifier...



**Hofmann senior** and associate at OCTAVE's in-house transformer winding plant



One aspect of the superior natural OCTAVE sound: **Precisely matched tubes**

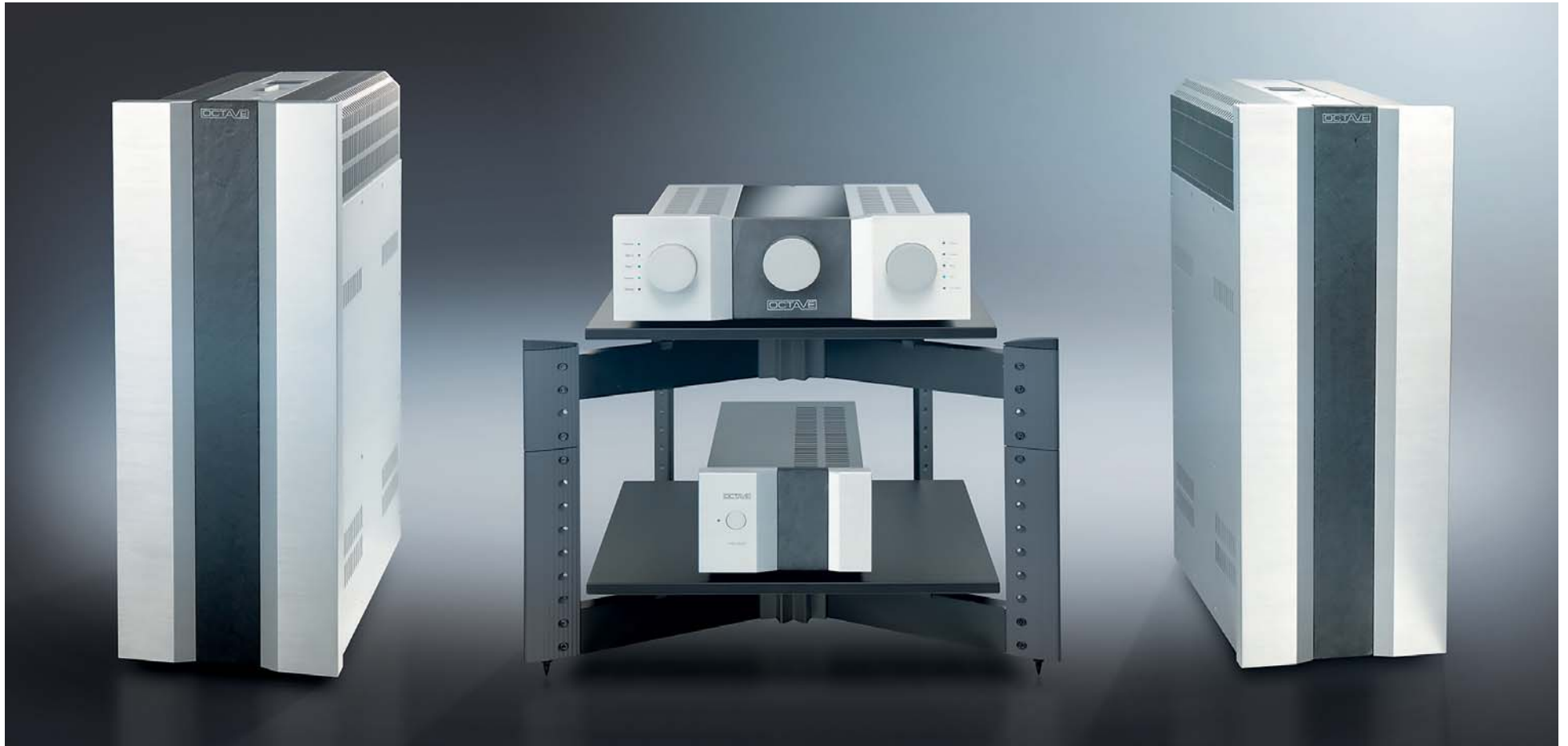


CEO and developer  
**Andreas Hofmann**

... can only be a tube amp, because tubes sound more natural and refined than solid state designs. But replicating the old trusted circuits is not enough. Known limitations must be overcome, as modern tube technology requires great knowledge, ongoing development, precisely matching components, a technically optimized environment and the most exacting handwork. We at OCTAVE wind our exceptional transformers ourselves and meticulously build each amplifier by hand. We have developed a hybrid transistor technology guaranteeing optimum security and playback precision. That's the way we have operated for over 30 years now, because we know one simple truth: it's the only way to achieve ultimate sound quality.

OCTAVE

# Jubilee



## State of the art

A project without consideration of expense or time constraints: For the **Jubilee series**, OCTAVE developed the hybrid circuit which unites classic valve technology to the modern world. The preamplifier **Jubilee Preamp** with external power supply is a virtually noise-free audiophile dream, and all OCTAVE amplifiers refute the prejudice of tube amps having low power. With its 440 watts, the **Jubilee Mono SE** drives each speaker to peak performance – guaranteed.



# Preamplifiers

## HP 700

Unmatched sound quality. Thanks to its modular architecture, the **HP 700** is one of the most versatile preamplifiers in the world. Even audiophile equalization is possible.



## HP 300 SE



Ultra low-noise preamplifier with balanced inputs and outputs, external power supply, and an amazingly natural and refined sound.

## Phono Module



In base form, a most excellent phono preamp for MM and MC pick-ups. Thanks to the modular concept, it is also configurable as a top preamplifier.

## Phono EQ.2



Powerful sound and versatile connectivity: Stand-alone (solid state) phono stage for MM and MC.



# Power amplifiers

## MRE 220

The power and substance of a superior solid state amplifier plus the refinement, elegance and naturalness of a modern tube - these are the sonic attributes of the **MRE 220** mono amplifier. The combination of four **KT 120** power tubes per channel and an ultra-refined power supply delivers over 200 watts per channel with unbelievable power and incredible control.



## MRE 130

The “small” OCTAVE mono power amplifier is optimized to the 6550 power tube. This valve grants the **MRE 130** a remarkable power output of more than 130 watts per channel.



## RE 320

The modern, new RE 320 stereo amplifier is optimized for the powerful KT 150 tubes, delivering up to 200 watts per channel – with incredible control, tremendous resolution and excellent dynamics.



## RE 290

The stereo power amplifier of our program amazes with its extraordinary precision and dynamics – and thanks to the **KT 120** power tube it delivers 2 x 100 Watts RMS.



# Integrated amplifiers

## V 80 SE

The **V 80 SE** is the most powerful integrated amplifier of our program and absolutely state of the art. The **KT 150** power valves bestow it with the authority of more than 120 watts per channel. And it is the only OCTAVE model which includes our excellent headphone amplifier.



## V 110 SE

The V 110 was Octave's first integrated amplifier model to deliver over 100 watts per channel. With the new Octave Dynamic Technologies (ODT) and an innovative adjustable damping factor, the all-new V 110 SE dramatically raises the bar for technology, performance and flexibility in the category of high end integrated amplifiers. The most precise match to any loudspeaker can be achieved – regardless of its impedance character and technical specifications.

## V 70 SE

A larger version of the **V 40 SE** offering the same natural and detailed performance with even more power, control and substance with an XLR input and the option to add phono.



## V 40 SE

Although it is the smallest amplifier of our program, its 40 watts per channel, impressive low noise and outstanding natural sonic character ensure a sound quality that is simply great (picture with **KT 88**).





# Input modules

The **HP 700** and **Phono Module** modular preamplifiers are comprehensively expandable to every requirement through OCTAVE's various module options:



## IN1: MM RCA ...

... Is an analog MM phono input with two input impedances: 47 kOhm for MM and 1 kOhm for MC High Output cartridges.



## IN7: XLR MC STEP UP ...

... Is a transformer with balanced inputs and a transfer ratio of 1:20. Recommended for long phono cables.



## IN2: MC RCA ...

... Is a MC phono input with two Gain levels. The input impedance can be varied from 60 - 1000 ohms.



## IN8: XLR Line Transformer Input...

... Is a balanced line input module with balanced input transformer. The ideal link to USB DACs & music servers.



## IN3: MC XLR ...

... Is a balanced phono input for MC cartridges. The Gain of this MC input can be switched between two levels. Input impedance of 60 - 1000 ohms.



## IN9: RCA Line Transformer Input...

... Is a line input module for RCA, with input transformer. Perfect for DACs, servers and similar modern source components.



## IN4: LINE IN ...

... Is an additional XLR or RCA line-level input. The selection is made by a switch on the rear panel.



## IN6: MC STEP UP ...

... Is a transformer for low impedance MC pickups. The transfer ratio can be switched between Gain 15 and Gain 30.

# Output modules

With the optional OCTAVE output modules, the **Phono Module** can be expanded to a complete, powerful sounding full-function preamplifier:



## OUT1: RCA STANDARD...

... Is a RCA output, which converts the Phono Module to a passive preamplifier.



## OUT2: DD RCA

DD stands for "Direct Drive": An even adjustable, small preamp on the board amplifies the signal – this way the power amps can be driven directly.



## OUT3: DD XLR

The variable Direct Drive output module is also available in a XLR version. This is especially beneficial when there is a long cable distance to the amplifier.



Example **HP 700**:  
It can be upgraded accurately with various add-on modules.



# The Black Box



## Black Box ...

... is an external power supply upgrade for the **V 40 SE, V 70 SE, V 110 SE, V 80 SE, RE 320, RE 290, MRE 130** and the **MRE 220**. It is a circuit with electrolytic capacitors, which increases the power supply to the power amplifier and stabilizes the PSO.



## Super Black Box ...

... is – similar to the Black Box – an external power supply upgrade with an even higher capacity for OCTAVE's **V 40 SE, V 70 SE, V 110 SE, V 80 SE** integrated amplifiers and **RE 320, RE 290, 130 MRE** and **MRE 220** power amplifiers. It upgrades the sound with an even greater level of power and control.



## Black Box Preamp ...

... is an external power supply gain for the **Phono Module**. It contains a sophisticated circuit with high quality electrolytic capacitors to increase the power supply of the PSO and stabilize it against occurring mains fluctuations.



# Comprising Experience

Over time we have developed a number of detailed solutions that make OCTAVE valve components the decisive bit better. The main features are summarized below:

## ECO Mode

If there is no signal for over ten minutes, the OCTAVE ECO Mode ensures that the heater voltage of the valves and the high voltage for the power amplifiers will shut down. This saves power and prevents expendable heat build-up. If a signal occurs, the circuit is slowly ramped up by the power management.

## Power Management

Valves must heat up slowly and in a defined manner in order to perform optimally. OCTAVE installed a special power management for a controlled startup and shut-down of all operating voltages. This significantly prolongs tube life.

## BIAS Setting

The BIAS setting ensures that the tubes always operate exactly at the highest level of sound quality. Installing new tubes is trouble-free; they can be easily checked and adjusted without moving the device. Thus, the tonal characteristics are always 100% guaranteed.

## Tube Rolling

We have designed the structure of the OCTAVE devices – assuming the same pin configuration is used – so that a tube model change (e.g. **KT 88** to **KT 120**) is easily performed.

## Gain (hi-mid-low)

High efficiency speakers present their own distinct challenges. The volume cannot be set sensitively as it needs to be adjusted in the lowest sector of the volume control. To compensate for this shortcoming, the Gain switch can reduce the amplification by a factor of 4. This improves the volume control and simultaneously decreases noise.

## In-house transformer winding plant

As the origins of OCTAVE lie in a transformer winding plant, we have long known how to develop the finest transformers ourselves and custom produce them exclusively for our components. Only high-temperature resistant enameled copper wires and low-loss core materials are used.



**ECO Mode and Power Management ensure extended lives for valves in OCTAVE devices.**



**The LED indicator on the display simplifies adjusting the optimum bias current of the tubes.**



**The remote control ...**  
...refers to our philosophy  
“as simple and consistent as possible.” It controls the volume only, nothing else.

# Technical specifications

How much power, how many inputs? In our overview you'll find the most important data & features of all OCTAVE models:



Model	Dimensions Height x Width x Depth	Weight	Output power	Inputs	Outputs	Black Box connection enabled	Featured specifications
<b>Jubilee Preamp</b>	152 x 435 x 560 mm	17.2 kg	—	6 x RCA, 2 x XLR	2 x RCA, 2 x XLR, 2 x Rec	✓	Gain adjustment; HT bypass
<b>Jubilee Mono SE</b>	707 x 280 x 484 mm	66 kg	1 x 440 W @ 4 ohms	1 x RCA, 1 x XLR	—	—	—
<b>HP 700</b>	130 x 462 x 480 mm	10 kg	—	3 x RCA, 2 x XLR, 1 x RCA bypass	All add on modules possible	—	Modular design, XLR output with transformer, HT bypass
<b>HP 300 SE</b>	78 x 438 x 390 mm	9 kg	—	3 x RCA, 2 x XLR	2 x RCA, 1 x XLR, 1 x Monitor	—	Gain adjustment; XLR output with transformer, HT bypass
<b>Phono Module</b>	82,5 x 437 x 487 mm	7 kg	—	Variable, depending on input module	Variable, depending on output module	✓ Black Box Preamp	Modular design
<b>Phono EQ.2</b>	55 x 100 x 167 mm	0.8 kg	—	1 x RCA MM, 1 x RCA MC	1 x RCA	—	Comprehensive Gain adjustment and impedance matching
<b>MRE 220</b>	229 x 488 x 498 mm	31.4 kg	1 x 220 W @ 4 ohms	1 x RCA, 1 x XLR	—	✓	Option input transformer
<b>MRE 130</b>	176 x 485 x 493 mm	22.7 kg	1 x 130 W @ 4 ohms	1 x RCA, 1 x XLR	—	✓	—
<b>RE 320</b>	210 x 488 x 495 mm	27.6 kg	2 x 130 W @ 4 ohms	1 x RCA, 1 x XLR	—	✓	High / Low switch for Tube Rolling
<b>RE 290</b>	186 x 485 x 493 mm	27,6 kg	2 x 100 W @ 4 ohms	1 x RCA, 1 x XLR	—	✓	High / Low switch for Tube Rolling
<b>V 80 SE</b>	175 x 451 x 490 mm	23 kg	2 x 120 W @ 4 ohms	6 x RCA, 1 x XLR, 1 x RCA bypass	1 x Rec, pre-out regulated, 1 x preamplifier output	✓	High-grade headphone amp- lifier, HT bypass, pre-out
<b>V 110 SE</b>	175 x 451 x 490 mm	22.7 kg	2 x 110 W @ 4 ohms	4 x RCA, 1 x XLR, 1 x bypass	1 x Rec, 1 x pre-out	✓	Adjustable damping factor
<b>V 70 SE</b>	160 x 451 x 490 mm	22 kg	2 x 70 W @ 4 ohms	4 x RCA, 1 x XLR, 1 x bypass	1 x Rec, 1 x pre-out	✓	HT bypass, pre-out
<b>V 40 SE</b>	159 x 408 x 490 mm	18 kg	2 x 40 W @ 4 ohms	4 x RCA, 1 x bypass	1 x Rec, 1 x pre-out	✓	HT bypass, pre-out
<b>Super Black Box</b>	149 x 203 x 360 mm	7.5 kg	—	Black Box connection	—	—	for all OCTAVE full and power amplifiers
<b>Black Box</b>	98 x 178 x 300 mm	3.1 kg	—	Black Box connection	—	—	for all OCTAVE full and power amplifiers
<b>Black Box Preamp</b>	98 x 178 x 300 mm	3.1 kg	—	Black Box connection	—	—	for the Phono Module



# HIGH END made in Germany



## **OCTAVE Audio**

Industriestr. 13  
76307 Karlsbad  
Germany  
Phone +49 (0) 7248 - 327-8  
Fax +49 (0) 7248 - 327-9  
[www.octave.de](http://www.octave.de)

Find us on   
[www.facebook.com/octave.world](https://www.facebook.com/octave.world)

**OCTAVE**  
MODERN CLASSIC